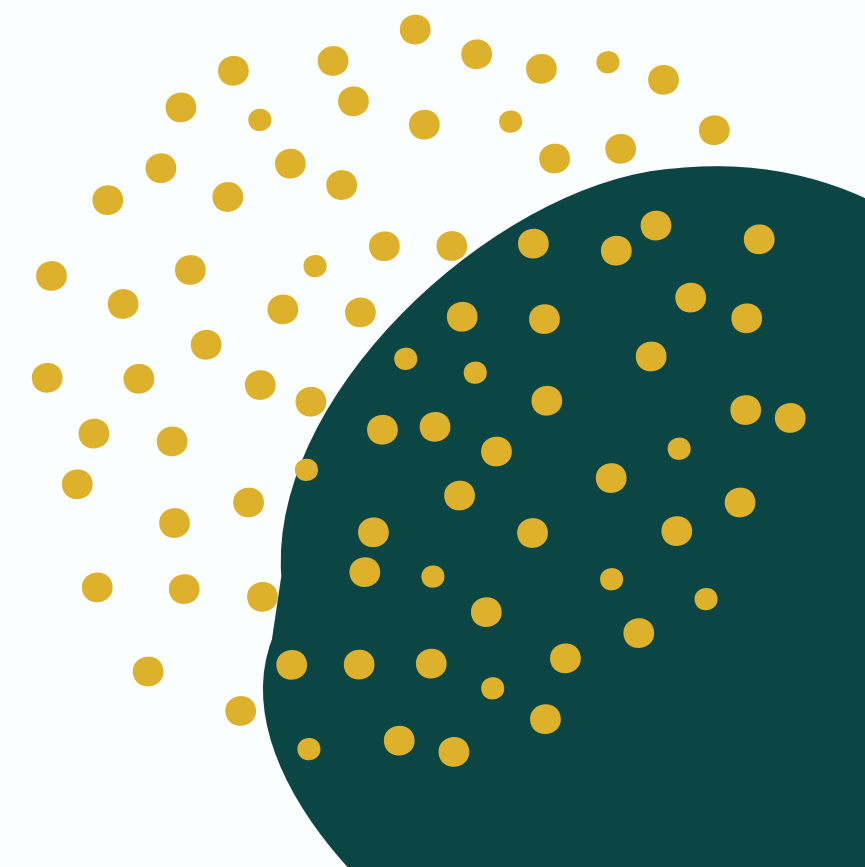


LINGUISTICS & APPLIED LINGUISTICS AT UCD

Presentation by Prof Bettina Migge





EXPERIENCE...

- a multi-subject School with staff from more than 12 different countries & an international Graduate Student cohort
- a vibrant & dynamic research culture, with regular talks and events, national and international conferences
- fully refurbished premises with a welcoming and modern atmosphere



Our School



THE KITCHEN

The kitchen is a fantastic space to get together, chat to members of staff and other Graduate students, to share ideas and experiences over cup of tea or coffee

SEMINAR ROOM

MA modules and talks take place in our new seminar room who offers a comfortable learning environment with brand new technologies



The SLCL School Office



The School Office is open 5 days a week and is there to help you with any queries or questions including:

- Module Registration
- Official Letters
- Information on timetables
- Ethics applications
- Final thesis submission

Teaching Trimesters



**T1: September to
November 2020**



**T2: January to
April 2021**



**T3: June to mid
August**



**Graduation:
December 2021**



BASIC FACTS

DURATION

- 12 months (3 trimesters)
- 'study break' from mid-December to mid-January and 2 weeks in March

DELIVERY

- face-to-face /blended
- core classes delivered on Wednesdays

EXPECTATION

- 2 hours class delivery per module
- on average 6 hours guided study

STUDENTS

- between 7-15 student per class (core modules)
- larger class sizes (option modules)

Structure of the MA

Core Modules (70 Credits)



- Syntax
- Sociolinguistics
- Research Skills 1



- Phonetics & Phonology
- Corpus Linguistics
- Research Skills 2



- MA Thesis **OR**
- MA Internship **OR**
- MA Research Papers

Structure of the MA Linguistics

Option Modules (20 Credits)



- Minority Languages
- Intercultural Communication
- Second Language Acquisition
- Psychology of Language
- Language Acquisition
- The English Language for TESOL



- Global English
- Human Language Technologies
- Translation
- Meaning
- Topics in Language and Law
- Language & Learning in Schools

Modules are subject to availability, other modules may be possible too

ASSESSMENT

- Modules have several assessments throughout the trimester
- Types of assessments:
 - short essays
 - research papers
 - group work
 - hands on projects
 - exercises
 - exams
- T3 modules & assessment: allows you to follow your own interests
- Support content learning
- Support acquisition of a range of transferable skills



CORE TEACHING STAFF



BETTINA MIGGE

Professor of Linguistics

Sociolinguistics



MAIRE NI CHIOSAIN

Assoc Prof of Linguistics

*Phonetics & Phonology, Minority
Languages*



SANDRINE PERALDI

Assistant Prof in Linguistics

*Corpus Linguistics, Intercultural
Communications, Translation*

CORE TEACHING STAFF



JAMAL OUHALLA

Professor of Linguistics

Syntax



SARAH KELLY

Teaching Fellow in Linguistics

*Topics in Language and Law,
Global Englishes*



VERA REGAN

Professor of French

Second Language Acquisition

CORE TEACHING STAFF



FEARGAL MURPHY

Lecturer in Linguistics

Meaning



STEPHEN LUCEK

PostDoc in Linguistics

Global Englishes

ACADEMIC AND ADMIN SUPPORT



SIOFRA PIERSE

Assoc Prof in French Studies
Head of Graduate Studies
Head of French



EMER O'BEIRNE

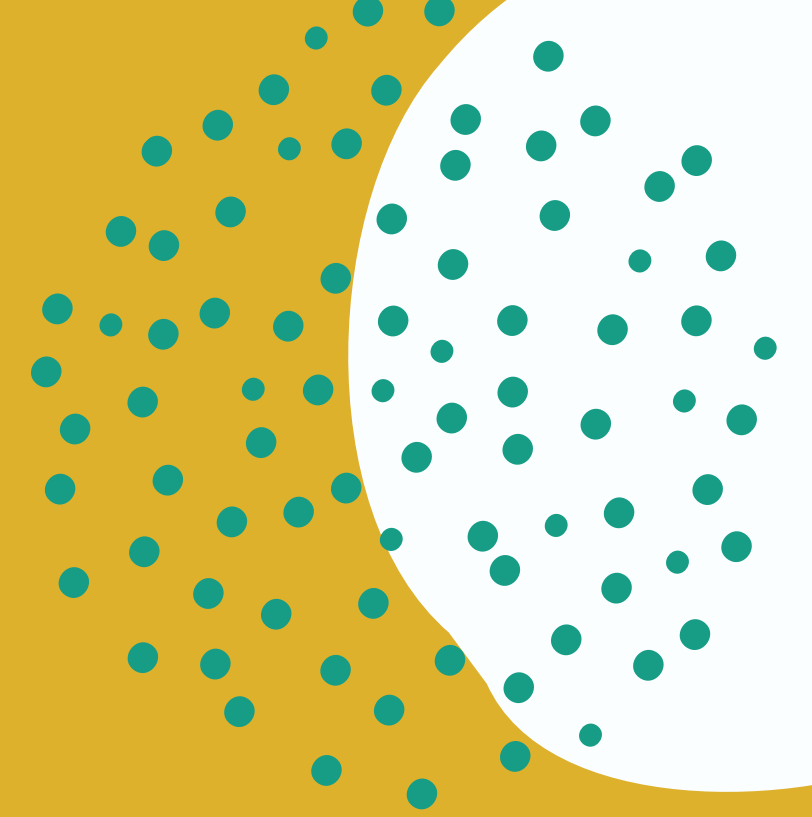
Assoc Prof in French Studies
Head of Graduate Studies
Coordinator of MA Modern
Languages



MELANIE PAPE

Graduate Administrator

Research



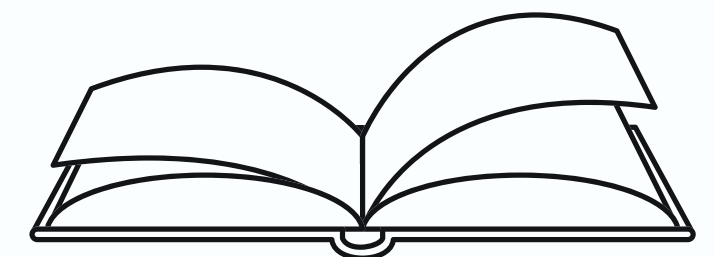
ALL MODULES HAVE A RESEARCH ELEMENT

Introduction to:

- different data types, data collection and analysis approaches
- critical assessment of theories
- application of research tools

T3 MODULES DEEPEN SKILLS

Students explore research topics of their choice using the skills acquired in the first two trimesters (under guidance of our expert staff members)





ACADEMIC SKILLS

Focus on hands on project work in groups and individually to enhance independent learning

APPLIED OPTIONS

Wide range of modules available in Applied Linguistics

SPECIALIZED TEACHING STAFF

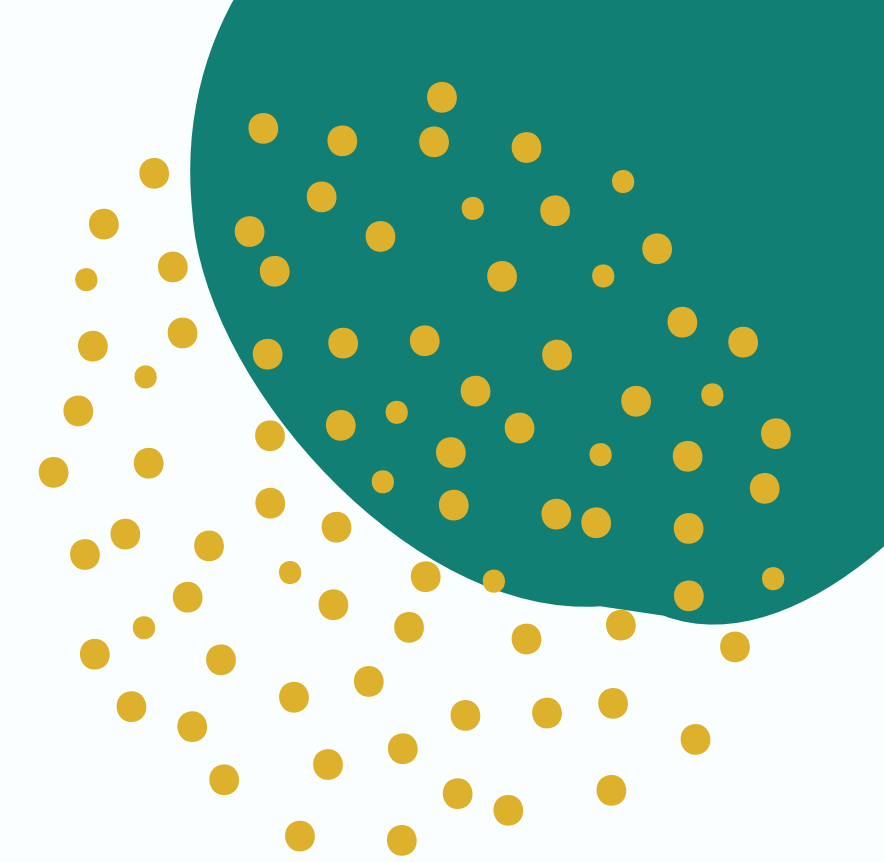
Modules are taught by experts in their fields

ACCESSIBILITY

Staff are easily accessible in person and via email, don't be scared to chat to us in the hallway or kitchen

VIBRANT COMMUNITY

We have an active and supportive Graduate community in our School



Unique Features

SLCL GRADUATE COMMUNITY

- Graduate Get-Togethers including Very Short Talks and Invited Speaker Slots
- Career Building Supports
- Graduate Coffee moments
- Convivial kitchen space available for Graduate student coffee sessions or small informal meetings.
- Annual School in-house conference at which each PhD candidate is encouraged to present a short paper in front of a positive and constructive audience
- New! Online self-publication space for PhD students (forthcoming 2020/21)



**We are looking
forward to
welcoming you
to UCD**





Useful links

SLCL WEBSITE

www.ucd.ie/slcl

SLCL MEDIA PORTAL

www.slclmediaportal.com

SOCIAL MEDIA

@ucdslcl



RESEARCH PROFILES

<http://www.ucd.ie/slcl/contact/staffprofiles/>

GRADUATE COMMUNITY

<http://www.ucd.ie/slcl/study/currentstudents/graduatecommunity/>

SCHOOL OFFICE

<http://www.ucd.ie/slcl/contact/>